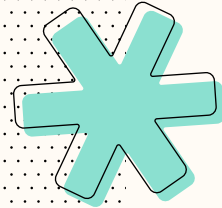




Awana®



# THE GLOBAL IMPACT OF AWANA

An independent  
study by  
Excellence in Giving

# Awana Builds Lasting Faith Foundations for Children Around the World

Excellence in Giving, a faith-based research organization, conducted two research studies to measure the long-term impact of the ministry of Awana in the U.S. and across five diverse countries in Africa and Asia. As the responses came in, **a lifetime of impact was revealed.**

**The U.S. study** focused on the impact of Awana on the lives of those who attended Awana Clubs as children. **The international study** focused on the immediate impact, comparing kids who were new to Awana with those who had been involved for a year or longer.

Engaging with Awana programming for any length of time established a solid foundation of faith for kids to build upon as they grew into adults. In the U.S., 97% of respondents reported having a Christian faith to this day! After a year of Awana programming, 92% of kids were sharing the love of Jesus on a regular basis (a 29% increase from before respondents attended club)!

So, can it be determined whether the programming of Awana is effective? Is the ministry successful in its mission to create child disciples who know, love and serve the Lord Jesus Christ? The answer, by God's grace, is an unequivocal YES!

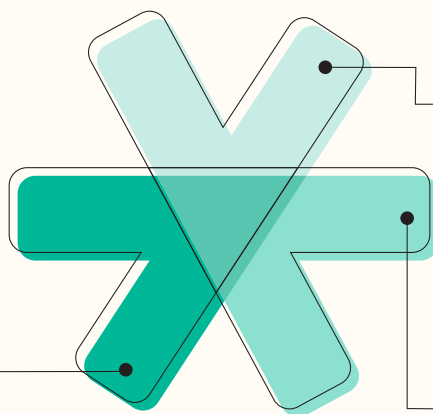
## FAITH FOUNDATION

Kids in Awana Clubs know who God is, and they believe in the authority of Scripture.



86%  
BECOME

"At Awana, I gained wisdom for how the Bible applies to my life."



87%  
BELONG

"At Awana, there was someone in my life who encouraged me spiritually."

60%  
BELIEVE

"Awana was instrumental in my decision to follow Christ."

\* Awana helps children form lasting faith by helping them **belong** to God and His kingdom, **believe** in Jesus Christ as Lord and Savior, and **become** like Jesus and walk in His ways through the power of the Holy Spirit.

## LASTING FAITH

Adults in the U.S. who experienced Awana as kids have formed a lasting faith in Jesus and are more resilient to cultural changes.



# UNSHAKEABLE FAITH

Awana helps kids form an unshakable, well-rounded faith that impacts various areas of their lives.



After a year in an Awana program outside of the U.S., **95% of kids surveyed were attending church** regularly, compared to 75% before the program.



U.S. adults who attended Awana Clubs as kids can **still remember the Bible verses** they recited, especially those who experienced 5+ years (a range of 20-38% more across the ages of respondents!).



**80% of kids currently in club pray** almost every day or more, with 26% of those surveyed praying many times a day!

## Awana Shapes Communities



## OUTWARD FOCUS

Consistent across all ages, Awana kids and alumni are becoming more like Christ by applying biblical practices into their daily lives, investing in relationships with others and serving those in their communities.



**3.8**

church volunteer hours each week



**4.6**

community volunteer hours each week

## AWANA PROGRAM DIRECTOR IMPACT

Those leading the Awana ministry in their regions spoke directly to the community and faith built around the world through Awana, and the value their senior leadership sees in the ministry.

**97%**

of program directors said children's ministry became a top priority after Awana.

**95%**

of program directors "strongly agree" or "agree" that senior leaders of their church/ministry are supportive of Awana.

**86%**

of program directors said the senior leader of their church/ministry encourages kids to attend Awana at least once a month.



# Conclusion



## JOIN US IN PRAYER

At Awana, we long for all children throughout the world to come to know, love and serve Jesus Christ for their whole lives. Therefore, we specifically pray for children and child disciplemakers all over the globe each day.



## GIVE A GIFT

Your generous gift will be put to use immediately to transform young lives and eternities. Invest in child discipleship today.



Give today at [awana.org/donate](https://awana.org/donate)



## PARTNER

The mission of child discipleship can be a part of your legacy when you make a Planned Gift with Awana:

- Leave a gift in your will.
- Give stock, real estate and other non-cash gifts.
- Support Awana in a way that pays you income for life.